



 Q·nomy

Public Health
Crisis Management

IN

Q-nomy supports the complete cycle of public health management during pandemic and nation-wide health threats.

Trusted by Governments and large leading Healthcare organizations worldwide

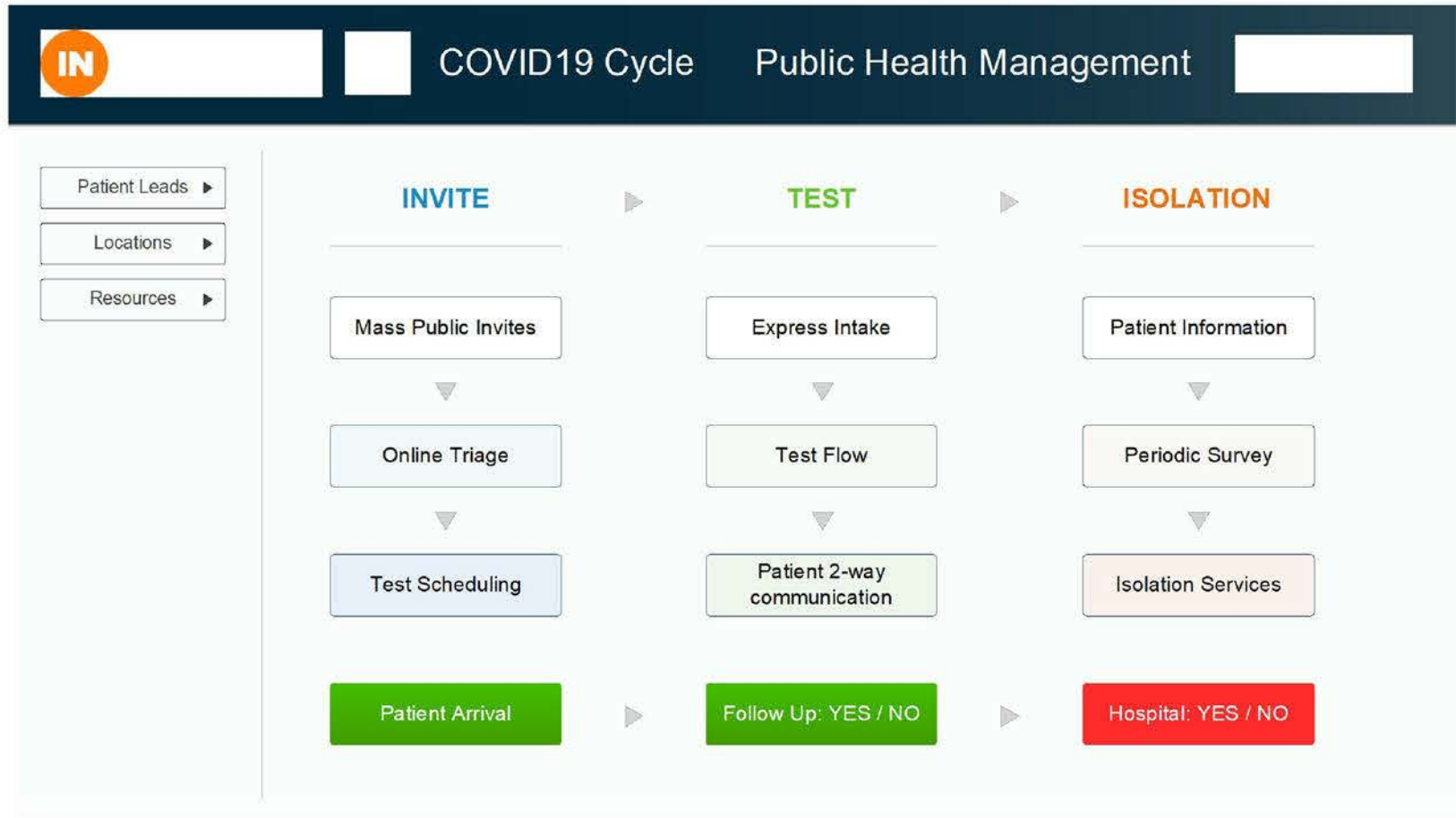


IN

COVID19 Cycle Public Health Management

- 1 Managing state-wide virus carrier tests
- 2 Managing isolation: @home and @facility
- 3 Nation-wide Vaccination

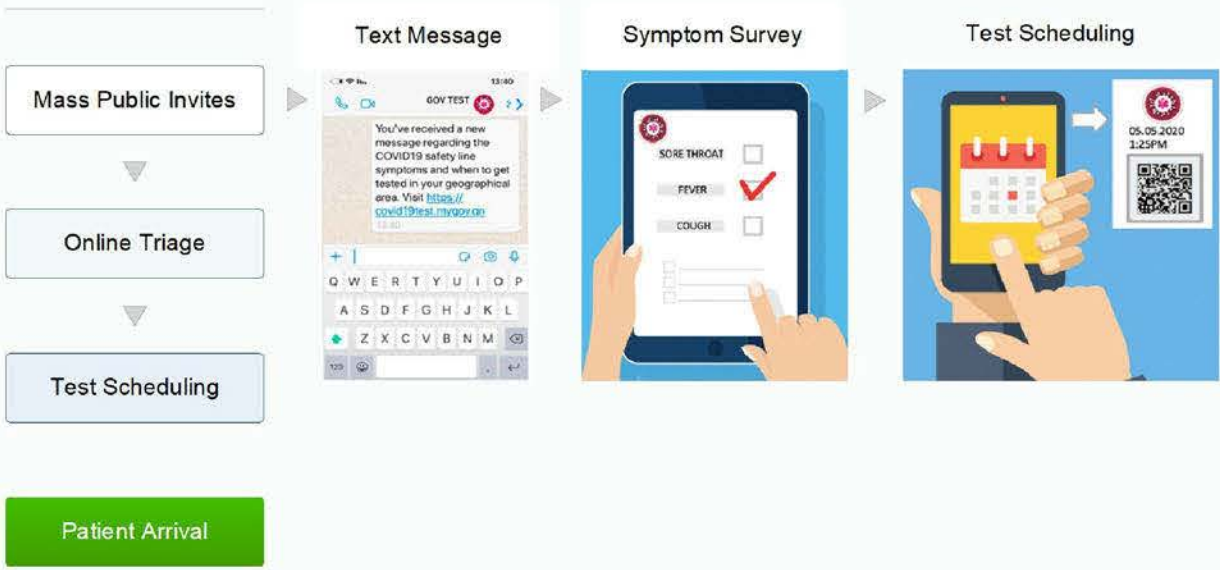
Goal: National Resource Optimization



IN COVID19 Cycle Public Health Management

- Patient Leads ▶
- Locations ▶
- Resources ▶

INVITE



IN COVID19 Cycle

- Patient Leads ▶
- Locations ▶
- Resources ▶

TEST

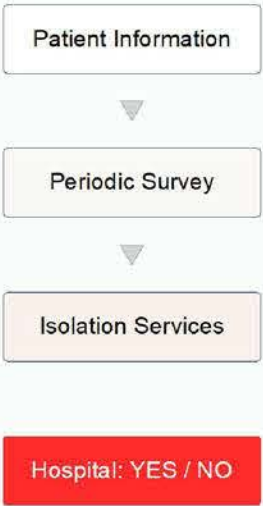


Follow Up: YES / NO

IN COVID19 Cycle

- Patient Leads ▶
- Locations ▶
- Resources ▶

ISOLATION



Content Push



Daily/Weekly Survey



IN

COVID19 Cycle

Patient Leads ▶

Locations ▶

Resources ▶

ISOLATION

Patient Information ▶

Periodic Survey

Isolation Services

Hospital: YES / NO



▶ Schedule Video Doctor Appointment

▶ Schedule 2nd, 3rd test

▶ Patient Request Form

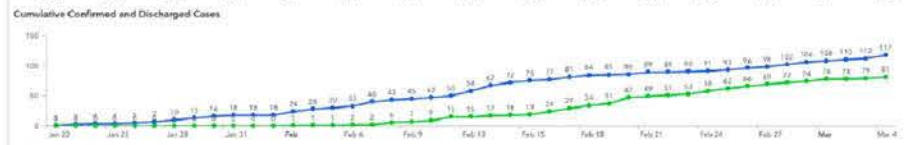
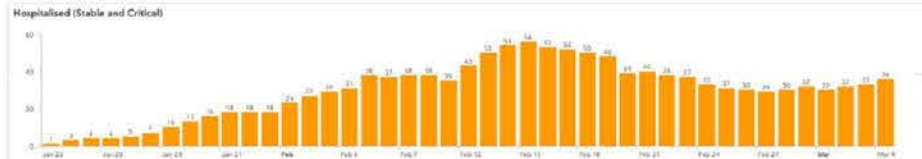
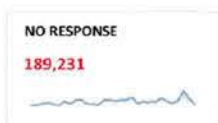


Nation-wide COVID19 Dashboard

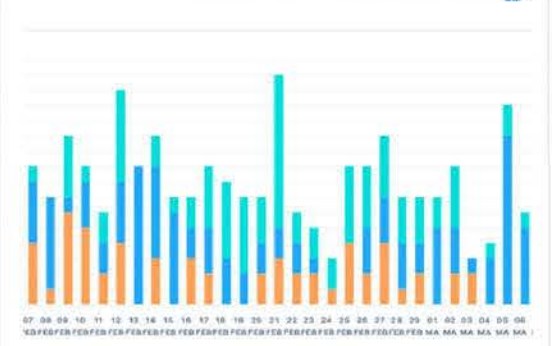


PHM Outbreak Dashboard

21 JANUARY 2020 TO TODAY



30 DAYS OVERVIEW



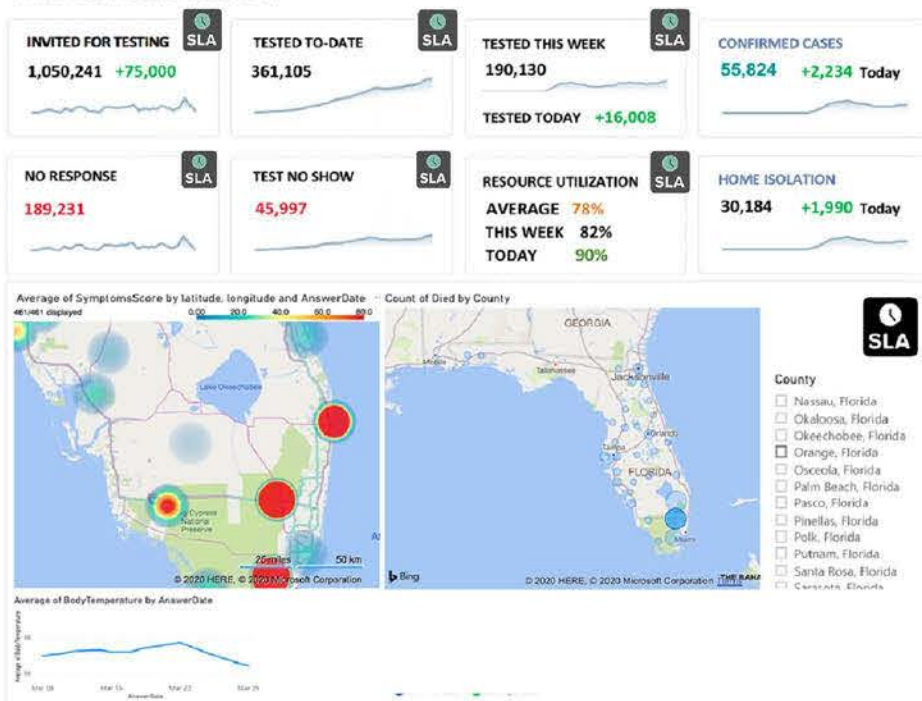
07 08 09 10 11 12 13 14 15 16 17 18 19 20 21 22 23 24 25 26 27 28 29 01 02 03 04 05 06 07 08 09 10 11 12 13 14 15 16 17 18 19 20 21 22 23 24 25 26 27 28 29 01 02 03 04 05 06

IN



Nation-wide COVID19 Dashboard

PHM Outbreak Dashboard



Monitor your goals



Optimize Nation-Wide Resources

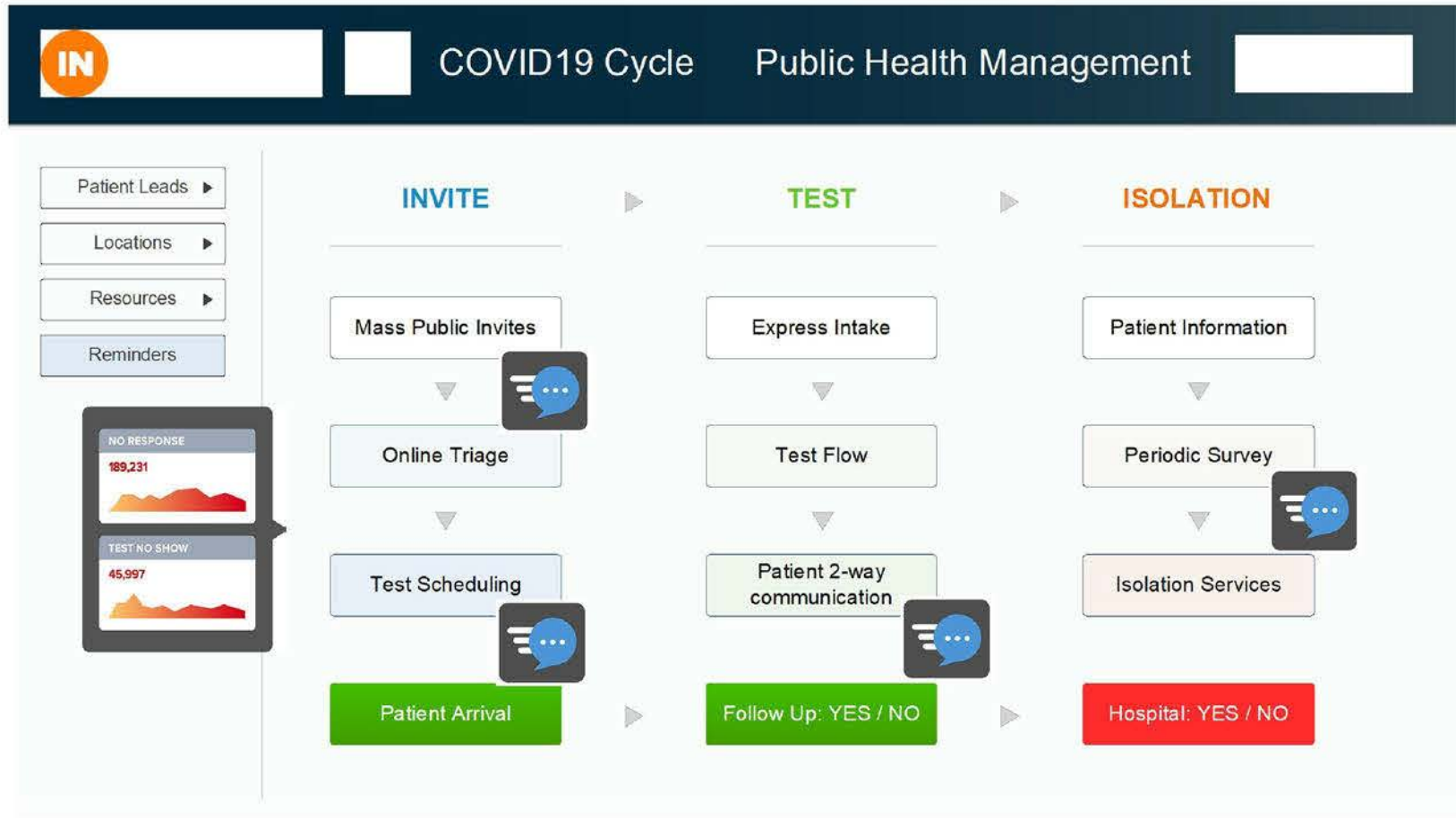


Manage Exceptions and disruptive patient behaviors



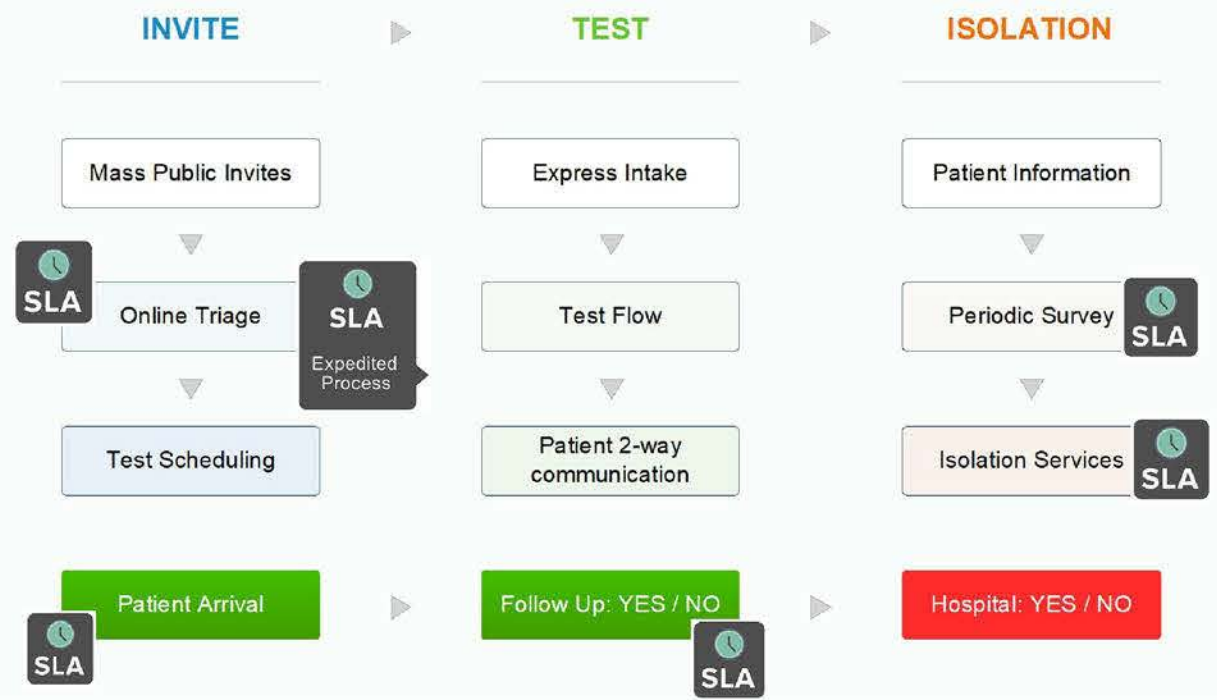
Get insights:

1. Which area to target next
2. Exit strategy: where is safe



IN COVID19 Cycle Public Health Management

- Patient Leads ▶
- Locations ▶
- Resources ▶
- Reminders ▶
- SLA Control ▶





Advantages

- Q-Flow Orchestration Platform. Developed In-House. Since 2002.
- Experience managing State-wide fast implementation
- Deployment partners in 25 countries
- Deployment in weeks
- No Patient training required, minimal TTT for staff
- Integrations: API, Webhook, MS Exchange, HL7 and more



COVID19 PHM – Project's Recommended Practices



- Prompt Deployment, 2-3 weeks: easier over cloud infrastructure
- Phased Approach for: Solution's modules, interfacing with 3rd party
- Fit everyone: the digital flow does not require to download an app

Example:

UK's DOH starts with test scheduling in 100+ testing locations.

From awarding P.O. to operation <10 days



THANK YOU

 Q·nomy

Public Health

Crisis Management